

Operation of the T80 chair lift

Contents	Page
1 General.....	3
1.1 Technical data.....	5
1.2 Ambient conditions.....	5
1.3 Testing obligations.....	5
2 Intended purpose of use.....	5
2.1 Transport profiles.....	5
2.2 Inappropriate	6
2.3 use.....	6
2.4 Operator qualification.....	6
2.5 Product description.....	7
General sketch of the T80 chair.....	
3 Safety.....	8
4 Operation.....	10
4.1 Main switch.....	10
4.2 Deep discharge protector.....	10
4.3 Battery charger.....	10
4.4 Fetching and sending the chair.....	11
4.5 Travelling with the chair.....	11
4.6 What to do in the event of an unexpected standstill.....	12
4.6.1 Manual operation.....	12
5 Options/extras.....	13
5.1 Visual warning signal.....	13
6 In the event of a malfunction	14
7 Acoustic warning signals.....	14
8 Services.....	15

! Important !

Please read the operating instructions before using the lift.

Also make sure that everyone who uses the lift has read and understood the operating instructions.

No rights whatsoever can be derived from the operating instructions.



EU declaration of conformity for machines

(EU machinery directive 2006/42/EU)

The manufacturer

LIPPE Lift GmbH
Weststrasse 48, D-32657 Lemgo,

hereby declares that the following machine

Inclined stair lift / chair lift / type T80

➔ conforms to the stipulations of the directive named above

➔ conforms to the stipulations of the following additional directives:

EMC directive 2004/108/EU

Low-voltage directive 2006/95/EU

➔ The following harmonised standards were applied or their protective goals were attained:

EN 81-40 (2009)

EN 349 (2008)

EN ISO 12100-1 (2004)

EN ISO 12100-2 (2004)

EN ISO 13850 (2007)

EN ISO 13857 (2008)

EN ISO 14121-1 (2008)

EN 60204-1 (2007)

➔ The following notified body: TÜV AUSTRIA SERVICES GMBH (IDF no.: 0408) was employed for:
EU type testing, test report no.: TÜV-A-MHF/MG18-00001

Specific details according to the Radio Equipment Directive 2014/53/EU:

The product was brought onto the market in accordance with Article 17 (2) a) of the Radio Equipment Directive.

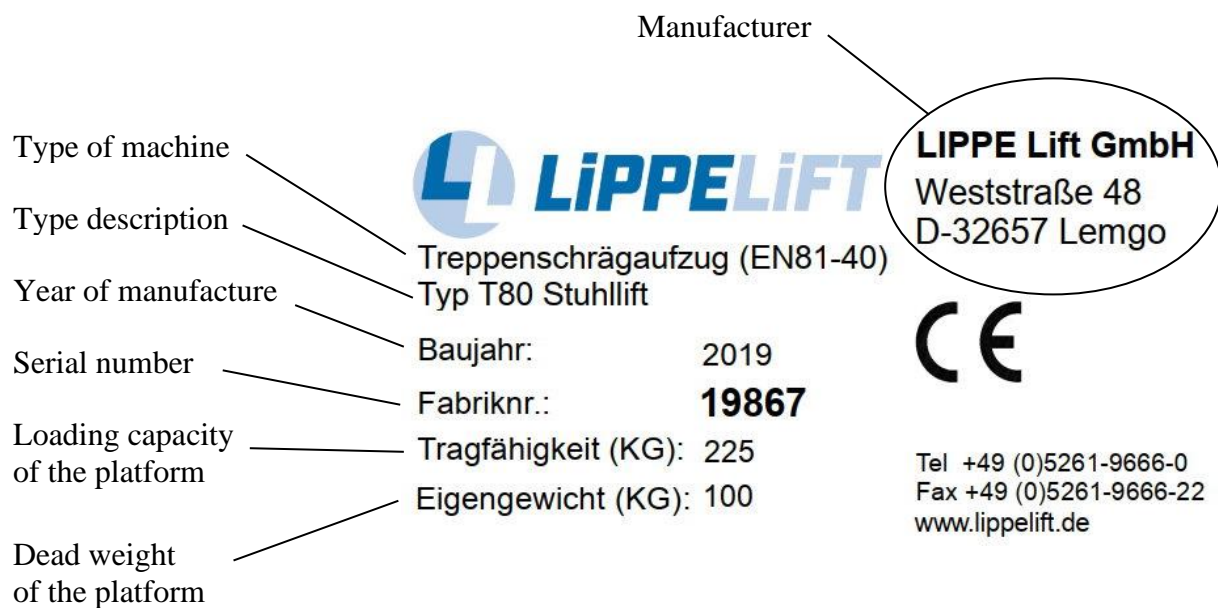
Responsible for the documentation: LIPPE Lift GmbH (Documentation Dept.)
Weststrasse 48, D-32657 Lemgo

Lemgo, 12.01.2018

F.-W. Mueller (Managing Director)

1. General

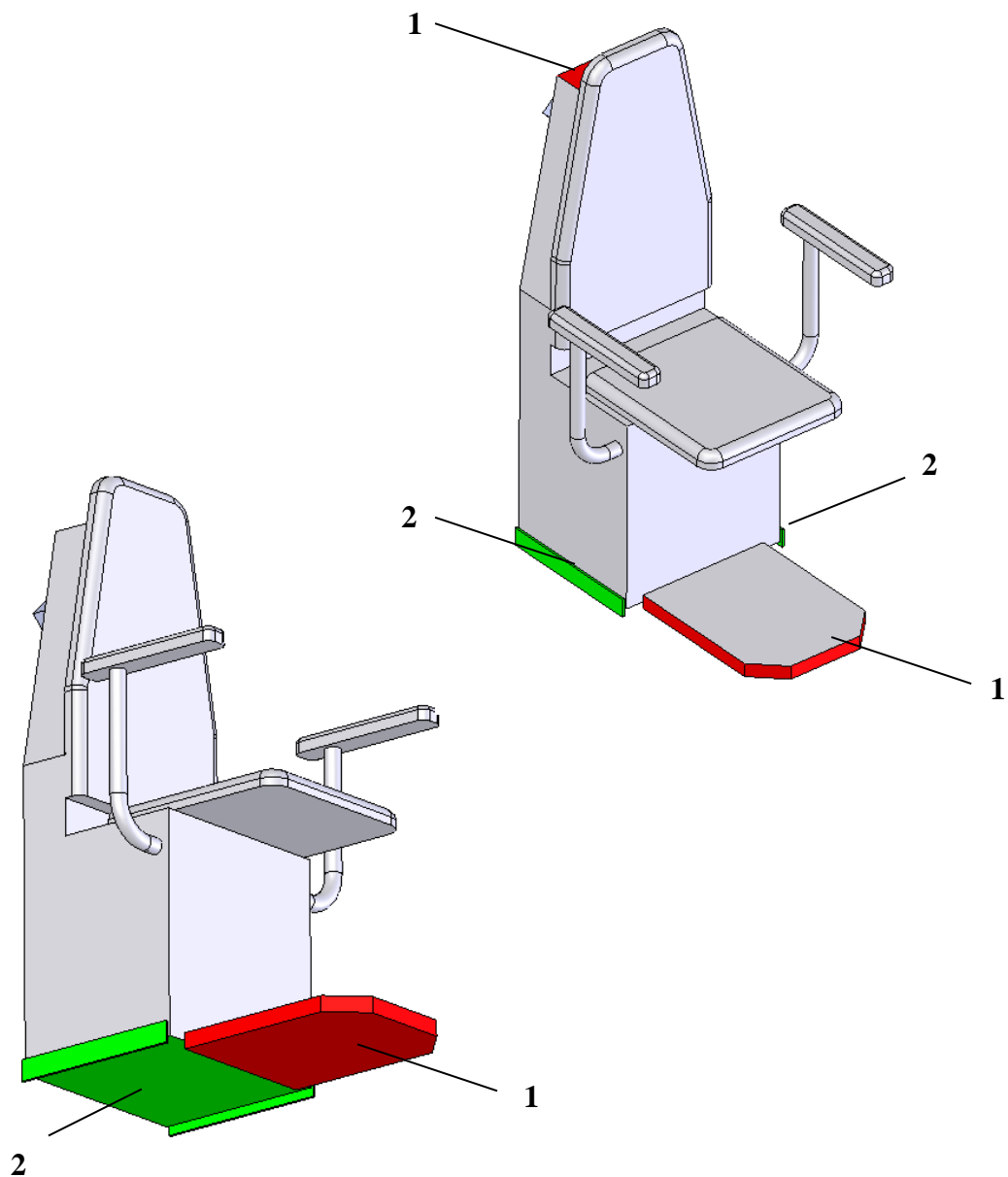
The rating plate provides the most important information about the platform lift.



Field for details of the importer/dealer

--

The T80 chair lift is equipped with many sensory surfaces. Here is an overview:



1 = integrated in the safety circuit (further travel is not possible if activated)

2 = direction-related power-off (the lift can travel in the opposite direction)

If a direction-related sensitive surface (Pos.2 / green) is activated, the lift stops and an acoustic signal will be activated. After two seconds the lift drives, without any command, for the length of 1,5 seconds in the other direction and stops then. Only now the acoustic signal stops. The “release-travel” can only be stopped by activating another sensitive surface, activating a safety switch or with the emergency stop.

The first driving command after the “release-travel” has to be in the opposite direction as the last command.

1.1 Technical data:

Permissible loading capacity:	max. 225 kg
Continuous sound pressure level:	< 70 dB (A)
Vibrations:	< 0.5 m/s ² (measurement inaccuracy ± 3%)
Speed:	approx. 0.1 m/s
Platform voltage:	24 V DC
Battery charger voltage:	230 V AC (55W)

1.2 Ambient conditions:

Temperature range:	-20 °C to +60 °C
Rel. humidity:	max. 100%

1.3 Testing obligations

Whether or not the T80 chair lift is subject to an obligatory test depends on the respective national regulations and is the user's responsibility. These regulations must be checked and adhered to. In Germany, a test is obligatory for systems with a lifting height of $\geq 3m$.

In each case, proof must be provided and documented in accordance with EN81-40 before the first use.

The T80 chair lift is to undergo maintenance in accordance with the maintenance instructions at least once per year. We recommend that you take out a service contract with your dealer.

2. Intended purpose of use

The T80 chair lift is intended for the transport of people with reduced mobility.

The chair lift travels between fixed access points along a permanently installed running rail, which can be implemented straight or curved. The chair lift is guided over the stairs or an accessible inclined surface by the running rail.

The system may only be operated by persons who have been instructed how to do so.

2.1 The following transport profile is foreseen:

1. Transport of one seated person

A usage profile of 10 start-ups per hour is foreseen (with distances covered of max. 15 m for each start-up). In the case of longer distances covered, the number of start-ups should be reduced accordingly (and linearly).

The T80 chair lift may be only operated if danger due to falling objects (such as flower pots) is ruled out.

2.2 Inappropriate use must be prevented, e.g.:

- Exclusive use for loads (if, in rare cases, loads such as shopping or beverage crates are transported, it is essential to ensure that the load is sufficiently stable and that the permissible loading capacity is not exceeded).
- Loads that protrude beyond the surface area of the opened footrest/seat may in general not be transported (e.g. large pieces of furniture).
- The T80 chair lift is not a toy (children).
- Operation in potentially explosive atmospheres

2.3 Operator qualification:

The operator of the chair lift must have unrestricted mental abilities. Operators with seriously impaired vision may be transported only with an attendant, whereby the attendant issues the drive commands. Furthermore, the operator must have read and understood the operating instructions.

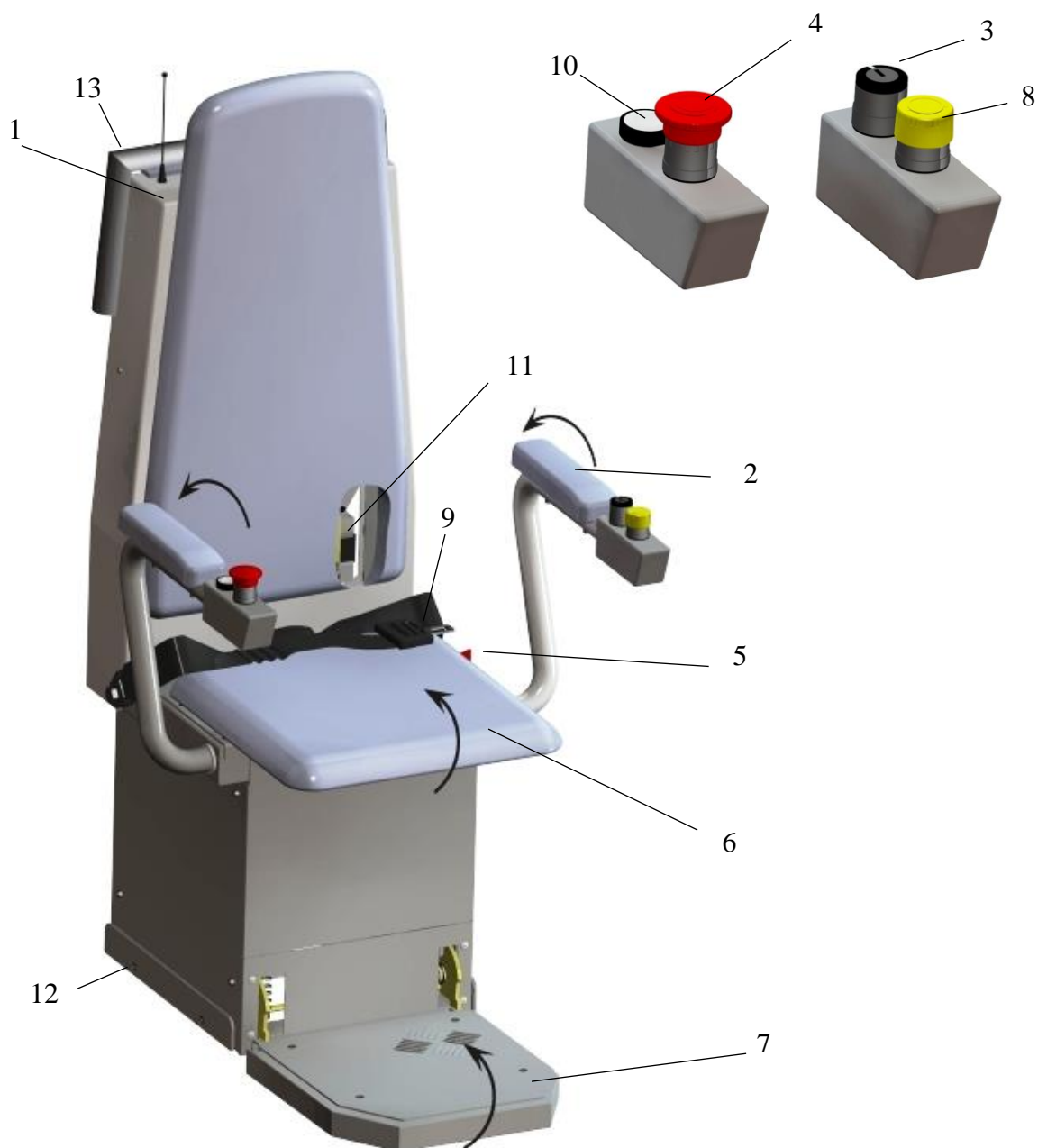
2.4 Product description

Our products combine the requirements for overcoming stairs with outstanding integration in the familiar environment in an appropriate way. On the one hand, the upper track tube can be used as handrail and, on the other, the platform and track are painted according to your wishes in a colour from the extensive RAL pallet. The track does not need to be lubricated, as a result of which undesirable dirtying is ruled out.

The permissible load capacity is 225 kg (measuring point for this is the centre of the seat).

The continuous sound pressure level is less than 70 dB (A).

We recommend that you take out a service contract. This guarantees the technically optimum condition of your T80 chair lift by means of regular maintenance. The maintenance interval is at least once per year.



Item	Designation
1	Hood
2	Armrests, foldable
3	Key switch control element (I-0-II)
4	Emergency stop button
5	Main switch
6	Seat, foldable
7	Footrest, foldable
8	Emergency call
9	Safety belt
10	Enable button
11	Charging circuit breaker (at the rear of the chair)
12	Frame side contact (at both sides)
13	Sensitive hood contact

3. Safety and special instructions

! ATTENTION ! Although your lift complies with the latest safety regulations, it is essential to follow the safety instructions below:



Put the lift into operation only after reading the operating instructions and adhere to the operating instructions.



Never exceed the permissible loading capacity.



Prevent unsupervised and improper use (e.g. by playing children).



Operate the lift only when seated.



Do not use the lift in the case of fire.



Do not allow loosely hanging articles of clothing to get near to the running rail when the lift is moving.



Fold up the lift when not in use – risk of tripping up.



Never place your hands near the running rail when the lift is moving.



Be sure to observe the track in the direction of travel when travelling.



The lift is approved only for the transport of one seated person.



Never insert solid articles or liquids into slots or other openings, even when the lift is at a standstill.



Do not remove, cut through, deform, or use undue force to operate parts of the lift, cladding parts or operating elements.



Do not push the armrests with undue force, either while travelling or when raising or lowering them.



Stop the drive command immediately if there are obstacles or articles in or on the running track or chair, or in the driving area.



Do not remove any labels or signs belonging to the lift.



Have repairs carried out exclusively by specialists.



Do not use the lift in a potentially explosive atmosphere.



Do not make any unnecessary movements on the chair, such as rocking or swinging.



In the case of interior and exterior installations, brief or permanent flooding of the lift is forbidden.



Remove dirt from the lift with a little polish or a damp cloth, not with a water jet.



The chair and track must be sufficiently well lit by daylight or electric lighting. The electric lighting must be independent of timer circuits.

4.1 Main switch

The main switch (red key) is located on the chair frame, beside the seat (*see page 7/item 5*). The key can be removed by turning it anti-clockwise, thus disconnecting the power supply.

4.2 Deep discharge protector

All T80 chair lifts are equipped with an acoustic deep discharge protector. This acoustic signal generator is intended to protect the batteries against deep discharge. If the battery voltage drops below 22 V, a beep sounds at intervals of approx. 5 seconds. In this case you should drive immediately to the next charging station – if possible the lower charging station – and allow the lift to charge up there for several hours (this takes place automatically in the charging station). The beep stops after proper charging. The sound can be turned off by pressing the emergency stop button; this has no influence on the charging process.

Note: A signal likewise sounds if the chair lift is not charged 30 seconds after the last motor movement.

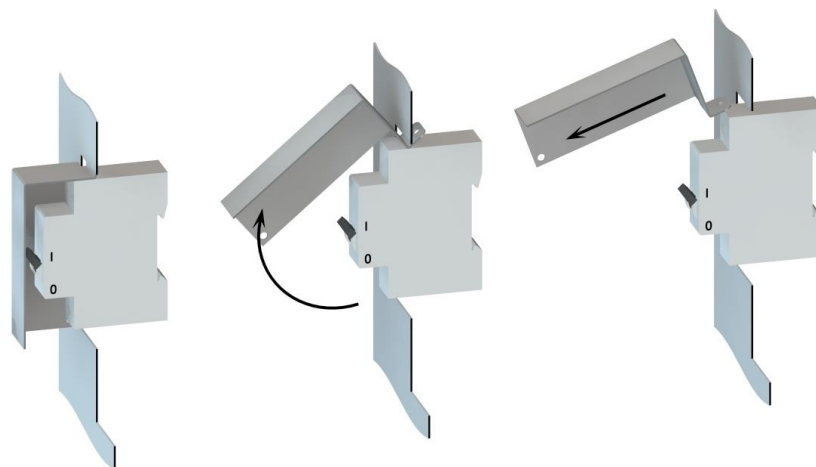
4.3 Battery charger (indicator lamps)

The indicator lamps on the battery charger indicate the respective condition of the battery charger. Distinction must be made between different versions of the battery charger.

The meaning of the various colours or indicator lamps is shown on the battery chargers. The installer will explain this to you in detail once again during the instruction.

If charging does not take place, although the battery charger is ready for use and the lift is located correctly in a loading station:

Please check the charging circuit breaker (*see page 7, item 11*); this is located at the rear of the chair lift. To do this, the cover (*exterior installations only*) must be lifted up (*fold the lower part toward the running rail; after that it can be pulled away in a downward direction*). The switch (small rocker arm) on the charging circuit breaker must be in the up position. Afterwards the cover is to be attached again.



4.4

Fetching and sending the chair

The chair lift can be fetched from or sent to another station from any station. To do this, the key must be inserted in the key switch at the corresponding station and turned in the corresponding direction (the drive command must be maintained continuously, so-called jogging operation).

The lift does not react immediately, but after a delay time of approx. 2 seconds.

Note: The lift drives from the external control points only in the **folded up** condition, i.e. the footrest and the armrests of the chair must be folded up.

In the case of a storey circuit (more than two stations) the chair lift is to be fetched or sent as follows: If the T80 chair lift reaches one of the middle stations, it stops there. If the T80 chair lift is to drive on, then the external control must be released briefly and then actuated again immediately, so that the chair lift continues to drive.

Proceed as follows in order to fold up the chair by hand:

- a) fold back the armrests
- b) fold up the seat
- c) fold up the footrest

Proceed in the reverse order to unfold the chair lift again.

Note: an LED is mounted on the radio transmitter for fetching/sending the chair lift.

GREEN: batteries are OK

ORANGE: the battery power is diminishing; renew the batteries at your earliest convenience

RED: the battery power is very low; replace the batteries immediately

4.5

Travelling with the chair

The following control elements are located on the armrests of the chair lift:

- a) Key switch Function -I-, -0- and -II- (*page 7/item 3*)
- c) EMERGENCY STOP pushbutton (red knob) (*page 7/item 4*)
- c) Enable button (*page 7/item 10*)
- d) Emergency call (*page 7/item 8*)

The function of the enable button described below can be omitted in very rare cases, e.g. if an arm has been amputated or is paralysed. The enable button is then present, but not working, i.e. it is as though the button were constantly depressed.

- ⇒ ! The chair lift must be unfolded (*see also 4.4*).
 - ! Sit down and put the safety belt on
 - ! Insert the key
 - ! Press the enable button and keep it pressed throughout the entire journey
 - ! Issue the drive command by turning the key in the desired direction of travel (the drive command must be maintained continuously – jogging operation)

- ⇒ Upon reaching the destination station:
 - ! The chair stops automatically at the upper or lower station respectively (the respective position is set during installation).
 - ! Release the enable button
 - ! Release the key and remove it
 - ! Release the safety belt and exit the chair lift.
 - ! The chair lift must be folded up so that it does not block the stairway (*see 4.4*).

- ⇒ The T80 chair lift stops automatically at a middle station; if you wish to travel further, briefly release the key and then turn it again immediately.

- ! If the journey is interrupted for any reason, a renewed drive command must be issued.

4.6 **What to do in the event of an unexpected standstill**

We recommend that a working mobile telephone be carried in order to alert the rescue services.

4.6.1 **Manual operation**

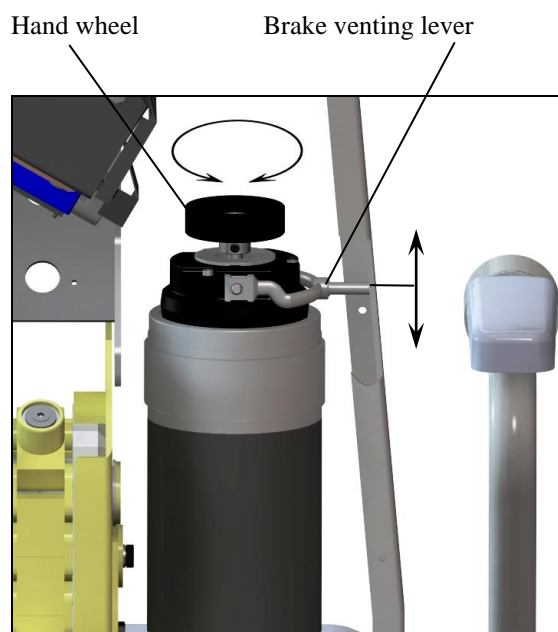
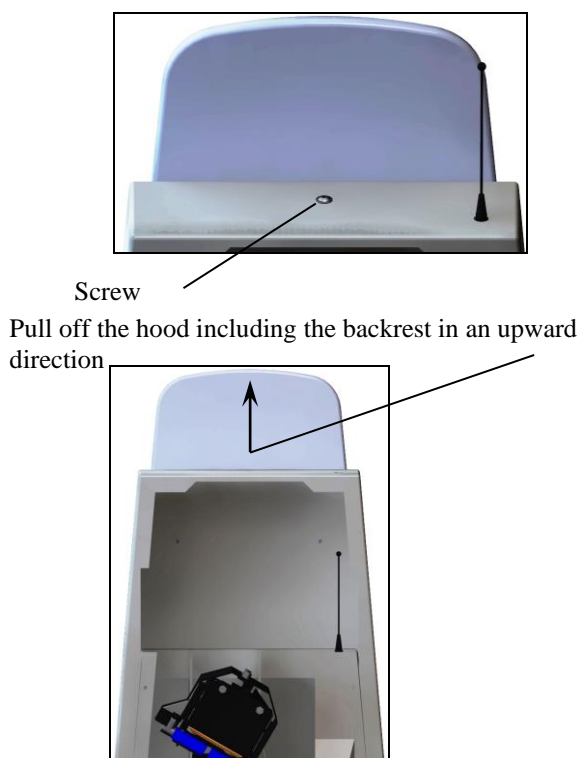
The T80 chair lift can also be operated manually. Manual operation must be performed by ***technical personnel***. The procedure is as follows:

- a) Press the EMERGENCY STOP button (*page 7/item 4*) on the chair lift.
- b) Remove the hood (*page 7/item 1*) (*the screw on the top side must be removed first in order to do this*). A switch is mounted on the hood whose cable must be removed from a plug connector. (Tool supplied in the envelope).
- c) Set the hood carefully aside.
- d) The brake venting lever is to be pressed upward or downward whilst at the same time turning the hand wheel on the end of the motor shaft (*see sketch overleaf*).

In doing so, the direction of travel should always be towards the lower station (less energy expenditure when turning the hand wheel). The respective direction of rotation is indicated directly on the hand wheel.

Note: If the cause of the standstill is not clear, it should be assumed that the safety arrester has been triggered and that its safety switch has led to the lift switching off. **The safety arrester may only be reset by technical personnel.** In this case, proceed as described above, but first turn the hand wheel in the UP direction (until the lift has moved approx. 5 cm along the rail), after which the hand wheel can be turned in the DOWN direction.

The chair lift must be folded up by hand so that it does not block the stairway (*see 4.4*).



5. Options/extras

Depending upon needs, the T80 chair lifts can be equipped with the following extras:

5.1 **Visual warning signal**

A visual signal (flashing orange light on the hood) is activated each time the chair lift moves. The repetition frequency of the signal is approx. once per second.

6. In the event of a malfunction

Malfunction	Possible cause	Remedial action
Lift does not function at all	Is the key on the control unit set to -I- or -II- and are the others set to -0- or removed?	Set the key switches correctly (see 4.4 or 4.5)
	Are all EMERGENCY STOP buttons unlocked?	Unlock the EMERGENCY STOP buttons by turning or pulling (depending on version)
	Is the main switch for the lift set to -I-? Batteries defective or deeply discharged	Turn on the main switch (see 4.1) Replace the batteries (technical personnel)
	Safety arrester has triggered	Inform technical personnel
Lift does not start when unfolded and occupied	Is the contact tub or frame side contact freely movable?	Slightly move the contact strip or frame side contact
	Is the enable button depressed?	Press the enable button and issue the drive command
Lift cannot be fetched or sent	Are all key switches at -0- except at the control station selected by you?	Set the key switches correctly (see 4.4 or 4.5)
	Are the transmitter batteries OK?	Replace the transmitter batteries
	Is the chair lift folded up?	Fold up the chair lift

If you cannot repair the error yourself in this way, please inform your customer service.

7. Acoustic warning signals

Duration [sec.]	Pause [sec.]	Reason	Remedial action
0.1	5.0	-Low battery voltage (see also 4.2)	Drive to the charging station and charge the batteries
0.1	0.5	Acoustic drive warning	-----
0.1	0.25	“Release-travel” (see page 4)	-----
2x short	4.0	Overttemperature of motor/electronics Or defective fuse	It is possible to resume driving after a cooling down period of approx. 5 min. (If cooling is insufficient, the cooling period is extended by a further 5 min.)
3x short	4.0	Faulty electronics/motor	Inform customer service
Continuous tone	----	Emergency call by means of beeper in the chair	Release the emergency call button.

Note: The acoustic warning signal can be suppressed by pressing the emergency stop button; the charging procedure is maintained (exception: continuous tone).

8. Services performed on your T80 chair lift at a glance

Installed on:		Serial no.:	
Installed by:		TÜV acceptance on:	
No.	Date	Service performed	Signature
1			
2			
3			
4			
5			
6			
7			
8			
9			
10			
11			
12			
13			
14			
15			
16			
17			
18			
19			
20			
21			
22			
23			
24			